



• BUILD A BAGEL •

Because you know what's best.

- HOMEMADE BAGEL: V+**
 PLAIN, SESAME, or EVERYTHING.....2⁵⁰
 ORIGINAL SUNSHINE GLUTEN FREE BAGEL.....5⁰⁰
 plain or everything, CONTAINS WHEAT

• WITH WEEKLY SPECIALS •

- SCHMEAR: V**
- | | |
|------------------------------|---|
| PLAIN.....1 ⁵⁰ | TOFUTTI PLAIN V+.....2 ⁰⁰ |
| SCALLION.....1 ⁷⁵ | TOFUTTI SCALLION V+.....2 ²⁵ |
| VEGGIE.....1 ⁷⁵ | RASPBERRY JAM V+.....1 ⁵⁰ |
| LOX.....3 ¹⁵ | BUTTER.....75¢ |

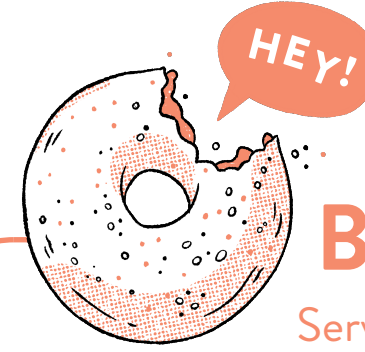
• ASK ABOUT OUR ROTATING CREAM CHEESE •

- | | |
|---|-----------------------------|
| ADD ONS: | VEGGIES: V+ |
| 2 SLICES of SWISS.....2 ⁰⁰ | AVOCADO.....2 ⁰⁰ |
| 2 SLICES of CHEDDAR.....2 ⁰⁰ | CUCUMBER.....75¢ |
| EGG SALAD 4oz.....4 ⁰⁰ | RED ONION.....75¢ |
| TUNA SALAD 4oz.....6 ⁵⁰ | CRISP LETTUCE.....75¢ |
| HUMMUS 2oz.....2 ²⁵ | PICKLED CARROTS.....75¢ |
| NOVA LOX* 2oz.....8 ⁵⁰ | TOMATO.....75¢ |
| KIPPERED SALMON 2oz.....8 ⁵⁰ | SLICED PICKLES.....75¢ |
| SABLE 2oz.....12 ⁰⁰ | HOTS.....50¢ |
| CHICKEN SALAD 4oz.....4 ⁵⁰ | |
| CORNED BEEF 2oz.....6 ⁰⁰ | |
| PASTRAMI 2oz.....6 ⁰⁰ | |
| SALAMI 2oz.....3 ⁵⁰ | |
| SLICED TURKEY 2oz.....3 ⁵⁰ | |



BEEF UP YOUR BAGEL • DOUBLE UP ON PROTEIN!

*THESE ITEMS ARE COOKED TO ORDER AND MAY BE SERVED RAW OR UNDERCOOKED. CONSUMING RAW OR UNDERCOOKED MEATS, SEAFOOD, SHELLFISH, OR EGGS MAY INCREASE YOUR CHANCE OF FOODBORNE ILLNESS. BEFORE PLACING YOUR ORDER, PLEASE INFORM YOUR SERVER IF A PERSON IN YOUR PARTY HAS A FOOD ALLERGY.



BAGEL SANDWICHES

Served on a housemade plain, sesame, or everything bagel

- THE IDA.....5⁵⁰ V**
 plain cream cheese, raspberry jam
- BAGEL, SCHMEAR, AND VEGETABLES.....7⁵⁰ V**
 veggie cream cheese, tomato, cucumber, red onion, capers
- NOVA LOX SANDWICH*.....15⁰⁰**
 nova lox, plain cream cheese, tomato, capers, red onion
- THE LASTNAMER.....14²⁵**
 kippered (hot smoked) salmon, scallion cream cheese, cucumber

GET IT ON AN ORIGINAL SUNSHINE GLUTEN FREE BAGEL FOR 2⁵⁰ • CONTAINS WHEAT

• EGG SANDWICHES •

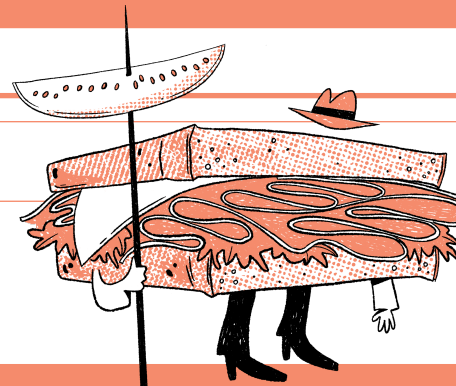
All of our cage-free eggs are scrambled & served on a homemade challah roll

- L.E.O. (LOX*, EGGS, AND CARAMELIZED ONIONS).....10²⁵**
 with dill mayo
- SALAMI, EGG, AND CHEESE.....10⁰⁰**
 with mustardy-mayo and cheddar
- PASTRAMI, EGG, AND CHEESE.....10⁵⁰**
 with russian dressing and cheddar
- MUSHROOM, EGG, AND CHEESE.....8²⁵ V**
 with zhoug mayo (jalapeño & cilantro), mixed greens, and cheddar
- EGG AND CHEESE.....7²⁵ V**
 two eggs with cheddar
- VEGAN EGG SANDWICH.....10⁵⁰ V+**
 Just Egg with spinach, vegan cheddar, avocado, scallion tofutti

ADD SAUCE FOR 75¢ • RUSSIAN DRESSING • MUSTARDY-MAYO • ZHOUG MAYO • DILL MAYO

• REUBEN

- SAUERKRAUT
 RUSSIAN DRESSING
 SWISS CHEESE



• RACHEL •

- COLESLAW
 RUSSIAN DRESSING
 SWISS CHEESE

SERVED HOT ON GRIDDLED RYE!

CHOOSE A PROTEIN: PASTRAMI • CORNED BEEF • TURKEY • SMOKED MUSHROOMS V

16⁵⁰

• SANDWICHES •

Served with a pickle; no sandwich is complete without one

MAMALEH'S PASTRAMI

- served hot with deli mustard on seeded rye
 HALF SANDWICH • ¼LB • 1 SLICE OF BREAD.. 13²⁵
 FULL SANDWICH • ½LB • 2 SLICES OF BREAD.. 21⁷⁵

MAMALEH'S CORNED BEEF

- served hot with deli mustard on seeded rye
 HALF SANDWICH • ¼LB • 1 SLICE OF BREAD.. 13²⁵
 FULL SANDWICH • ½LB • 2 SLICES OF BREAD.. 21⁷⁵

\$18 MEAL DEAL ADD A CUP OF MATZAH BALL SOUP TO A HALF PASTRAMI OR CORNED BEEF SANDWICH

50 / 50 served hot..... ½lb 19⁷⁵
 with deli mustard on seeded rye

CLASSIC EGG SALAD.....10⁰⁰ V
 with crisp lettuce on a homemade challah roll

TUNA SALAD.....12⁰⁰
 with tomato and crisp lettuce on seeded rye

CHICKEN SALAD.....10⁵⁰
 with crisp lettuce on a homemade challah roll

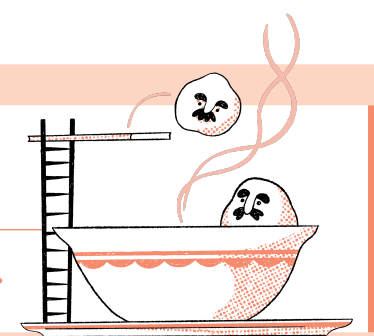
COLD TURKEY.....12²⁵
 coleslaw, swiss cheese, pickles, and russian dressing on a homemade challah roll

DOUBLE DOGS.....8²⁵
 two pearl hot dogs with deli mustard and sauerkraut on griddled buns

HUMMUS SANDWICH.....11⁰⁰ V+
 hummus, lettuce, tomato, red onion, pickled carrots, & jalapeño on a bagel of your choice

MATZAH BALL SOUP

THE PERFECT MATCH FOR A SANDWICH.



6⁷⁵

AT MAMALEH'S, WE TAKE ALLERGENS SERIOUSLY, BUT ARE NOT AN ALLERGEN-FREE FACILITY. OUR KITCHENS HANDLE NUTS, WHEAT, FISH, SESAME, EGGS, AND MILK. PLEASE INFORM US OF ANY ALLERGIES WHEN ORDERING, AND NOTE THAT CROSS-CONTAMINATION MAY OCCUR.

READ ME!